

## About Palms Associates

Beachwood Park is professionally managed and maintained by Palms Associates, a national leader in development, construction, and property management of multifamily rental communities. With over 50 years of experience, our dedicated team of over 200 professionals manages over 5,500 apartment residences throughout Virginia, North Carolina, South Carolina, and Georgia.

A community maintained by Palms Associates is subject to the latest procedures of professional management, to keep carefully landscaped grounds and high quality materials as attractive as they were on opening day. Most importantly, we are quality people working diligently every day to enhance our residents' lifestyles.

For more information visit us at [www.palms.net](http://www.palms.net).



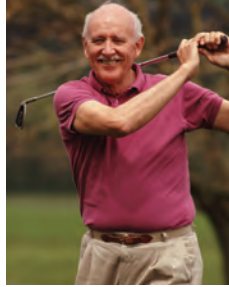
[WWW.PALMS.NET](http://WWW.PALMS.NET)



**Palms Associates**  
397 Little Neck Road - Building 3400, Suite 200  
Virginia Beach, VA 23452 | 757-340-3669



78207 Sig 09/16 3m



## A Planned Community!

Beachwood Park is nestled in a quiet community on the Neuse River, only minutes from the Research Triangle Park, one of the most prominent high-tech research and development centers in the United States, The Wake Medical Center, and downtown Raleigh, a great location!

Our open floor plans provide spacious townhomes and apartments with refreshed and modernized interiors, designer kitchens, private entrances, and a patio or balcony for each home. Beachwood Park is a pet friendly community and offers many wonderful amenities including a 24/7 fitness center, dog park, swimming pool, playground, internet cafe and more... creating the comfortable and convenient lifestyle you are looking for.

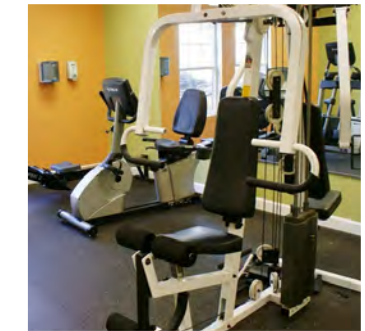


**From I-440:** Take Rt. 64 East (exit 13B) for 2 1/2 miles towards Knightdale. Stay in left lane, crossing Neuse River Bridge. At traffic light (Old Milburnie Rd.), make a U-turn, and we are on the right.

**From I-540 North:** Take exit 24A and turn right onto Rt. 64 West. Travel one mile, turn right onto Beach Pointe Ave, office is on the left.

## Apartment Amenities:

- Refreshed Interiors
- Upgraded Appliances
- Townhome Community
- Pet Friendly
- Private Entrances
- Patio/Balcony
- Wood Style Flooring
- Built-in Microwave
- Vaulted Ceilings
- Walk-in Closets
- Garages Available
- and so much more!



## Community Amenities:

- Pay Rent Online
- Flexible Lease Terms
- Resort-Style Pool
- Dog Park
- Biking/Jogging Trails
- BBQ/Picnic Area
- Internet Cafe
- 24/7 Fitness Center
- Playground
- Neuse River Canoe Launch
- Close to Shoppes at Midway Plantation and Wake Medical Center
- Minutes from I-540 and I-440
- Laundry Facility
- 24/7 Emergency Maintenance
- and so much more!



Raleigh | North Carolina  
[www.beachwoodparkapts.com](http://www.beachwoodparkapts.com)

Beachwood Park Apartments & Townhomes  
1001 Beach Pointe Ave. Raleigh, NC 27604

Phone: 919-217-7888  
Email: [beachwoodpark@palms.net](mailto:beachwoodpark@palms.net)

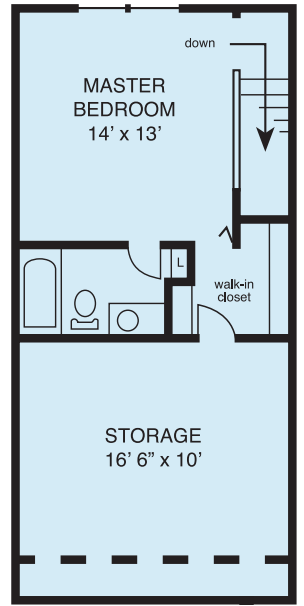
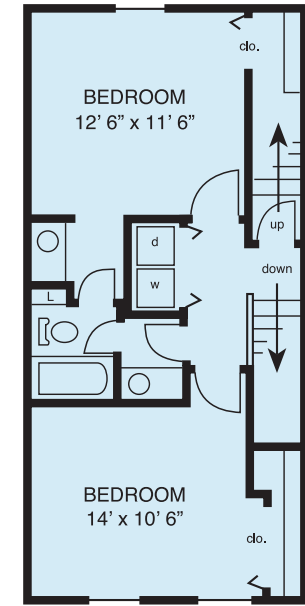
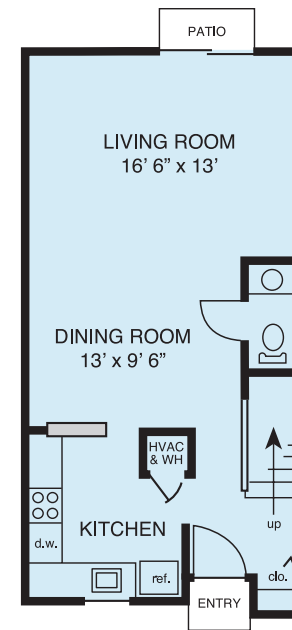
# Floor plans to satisfy your lifestyle!



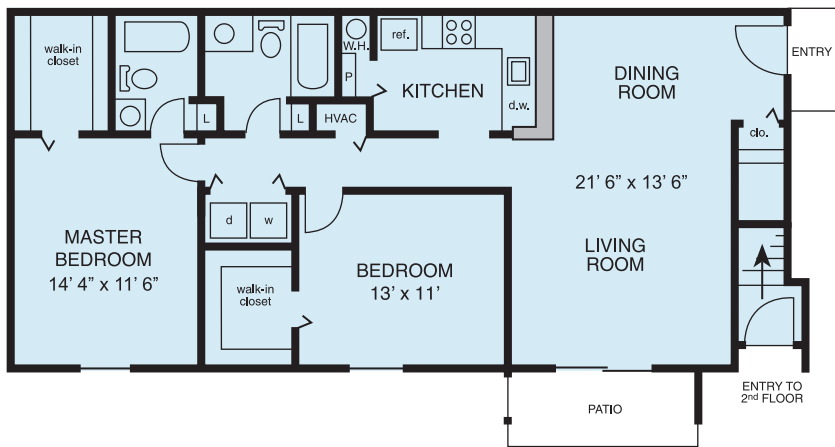
**The Frisco**  
1 Bedroom 1 Bath Garden - 790 square feet\*



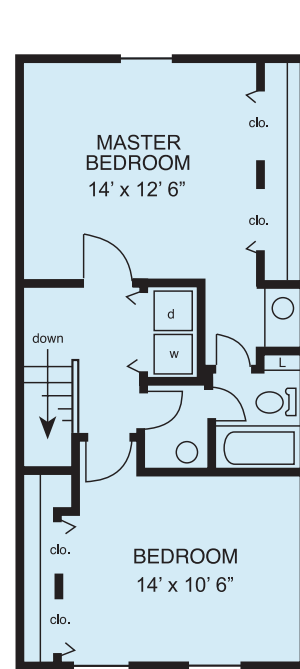
Contact us: 919-217-7888 | [beachwoodpark@palms.net](mailto:beachwoodpark@palms.net)



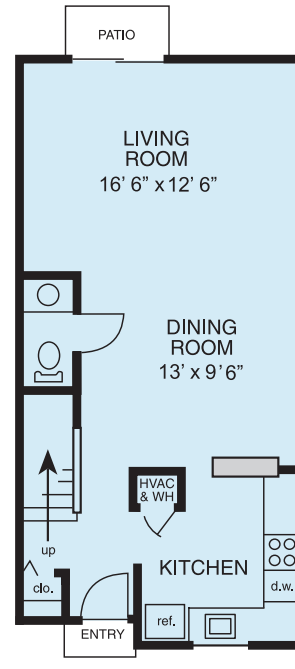
**The Rodanthe**  
3 Bedroom 2 & 1/2 Bath Townhouse - 1705 square feet\*



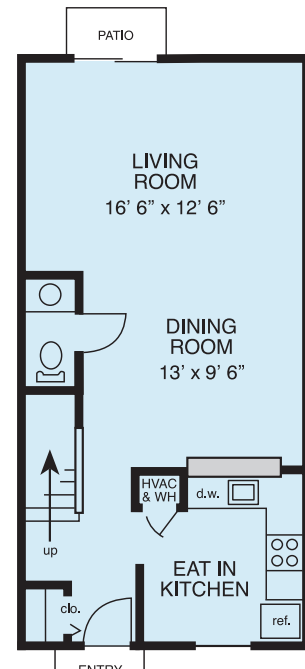
**The Hatteras**  
2 Bedroom 2 Bath Garden - 1074 square feet\*



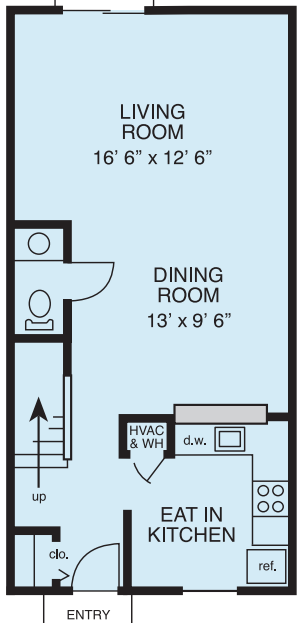
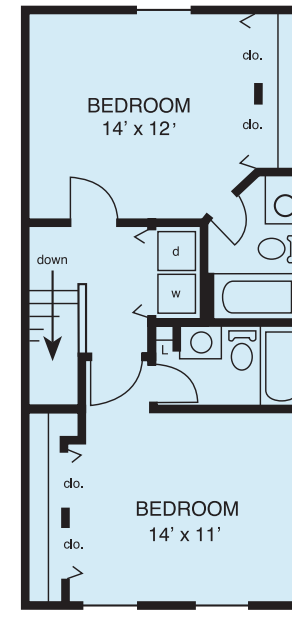
Option 1 - 1154 sq. ft.\*



Option 2 - 1181 sq. ft.\*



Option 1 - 1154 sq. ft.\*



Option 2 - 1181 sq. ft.\*

**The Kitty Hawk**  
2 Bedroom European Bath & 1/2 Townhouse optional kitchen floor plans

**The Manteo**  
2 Bedroom 2 & 1/2 Bath Townhouse with optional kitchen floor plans

\* Interior space only. Floor plans and sizes may vary in some apartments.