



# HAW CREEK MEWS TOWNHOMES

Distinctive Apartment Living

A planned community, **Haw Creek Mews** creates a "country" feeling with its wonderful mixture of open spaces, greenery and clusters of trees.

At **Haw Creek Mews**, the spacious apartments and townhomes are fully equipped with modern appliances, wall to wall carpet, air conditioning and optional washers and dryers - plus there is a pool and club house with fitness center for your recreation and relaxation.

Each of the seven styles of apartments and townhouses offers unique opportunities for you to decorate your home to your own special tastes.

**Haw Creek Mews** is a comfortable community where you'll feel at home at a comfortable price.

**Haw Creek Mews** is situated in a secluded East Asheville location just off Tunnel Road within minutes of the downtown area and Asheville Mall.



#### **DIRECTIONS:**

**From I-240 E:** Take exit #7. At 1st light, go straight. At 2nd light, turn left. At 3rd light, go straight onto US 70 E/Tunnel Rd. Travel .80 of a mile. At end, turn right into Haw Creek Mews entrance.

**From I-240 W:** Take exit #7. Turn right at light and follow directions as above.

**From I-40 E/W:** Take exit 53 B onto I-240 W and follow directions as above.

**From US 70 E:** Turn right onto Beverly Rd. Haw Creek Mews entrance is 1/4 mile on the right.

ASHEVILLE, NC  
[www.hawcreekmewsapts.com](http://www.hawcreekmewsapts.com)



**HAW CREEK MEWS**  
TOWNHOMES  
Distinctive Apartment Living

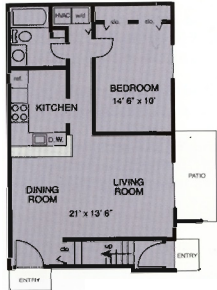
145 Haw Creek Mews Drive  
Asheville, NC 28805  
Tel: (828) 298-0000  
Fax: (757) 440-3189  
[HawCreekMews@palms.net](mailto:HawCreekMews@palms.net)





# Carefree Living At Its Very Best...

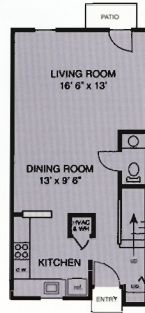
## Many Exciting Floor Plans to Choose From...



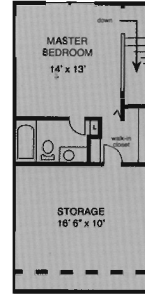
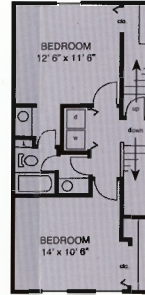
**The ABBINGTON**  
1 Bedroom 1 Bath Garden  
773 Square Feet\*  
Rental Rate: \$ \_\_\_\_\_



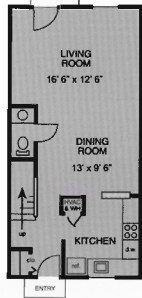
**The BRADFORD**  
2 Bedroom 1 Bath Garden  
941 Square Feet\*  
Rental Rate: \$ \_\_\_\_\_



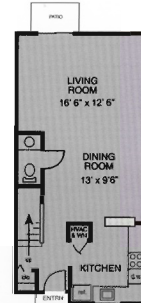
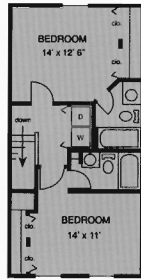
**The LAUREL**  
3 Bedroom 2 & 1/2 Bath Townhouse  
1705 Square Feet\*  
Rental Rate: \$ \_\_\_\_\_



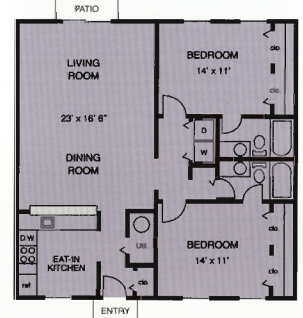
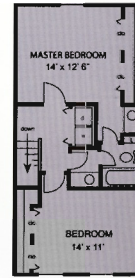
**The HAWTHORNE**  
3 Bedroom 2 Bath Garden  
1163 Square Feet\*  
Rental Rate: \$ \_\_\_\_\_



**The CUMBERLAND**  
2 Bedroom 2 & 1/2 Bath Townhouse  
1154 Square Feet\*  
Rental Rate: \$ \_\_\_\_\_



**The CHESHIRE**  
2 Bedroom European Bath & 1/2 Townhouse  
1154 Square Feet\*  
Rental Rate: \$ \_\_\_\_\_



**The EASTON**  
2 Bedroom 2 Bath Garden w/ eat-in kitchen  
1156 Square Feet\*  
Rental Rate: \$ \_\_\_\_\_

**HAW CREEK MEWS TOWNHOMES**  
Distinctive Apartment Living

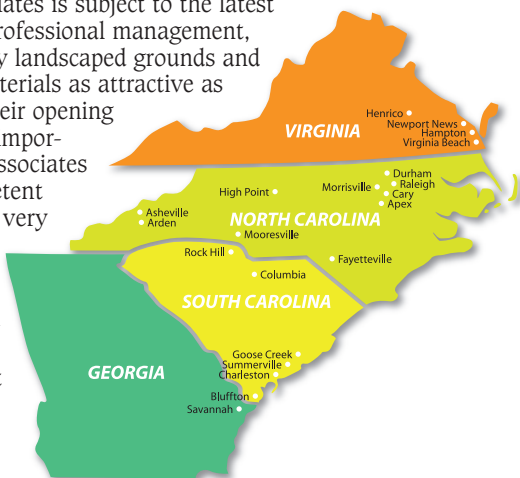
145 Haw Creek Mews Drive  
Asheville, NC 28805

CALL OUR FRIENDLY STAFF AT  
**(828) 298-0000**  
[www.hawcreekmewsapts.com](http://www.hawcreekmewsapts.com)

\*Interior space only. Floor plans and sizes may vary in some apartments.

# History Of Palms Associates

Your community is managed and maintained by Palms Associates - one of the finest and most experienced Property Management firms in the Southeast. The trained staff of Palms Associates manages over 5,000 apartment residences in major cities throughout four states. Understandably, it requires a high degree of professionalism, know-how and experience for an organization to operate successfully on this level over the years. A community maintained by Palms Associates is subject to the latest procedures of professional management, to keep carefully landscaped grounds and high quality materials as attractive as they were on their opening day. But, most importantly, Palms Associates has nice, competent people working very hard every day for you! Our dedicated on-site management will make you feel right at home.



*Distinctive  
Apartment  
Living*

**FOR  
COMPLETE  
INFORMATION  
CALL THE  
PROPERTY  
MANAGER**



## GEORGIA

Fords Pointe/Savannah . . . . . (912) 920-8900

## NORTH CAROLINA

Beachwood Park/Raleigh . . . . . (919) 217-7888  
 Beaver Creek/Apex . . . . . (919) 387-4666  
 Crabtree Crossing/Morrisville . . . . . (919) 380-9595  
 Haw Creek Mews/Asheville . . . . . (828) 298-0000  
 Laurel Bluff/High Point . . . . . (336) 841-7373  
 Longhill Pointe/Fayetteville . . . . . (910) 483-2410  
 Northwoods Mews/Cary . . . . . (919) 460-3838  
 Southridge/Arden-Asheville . . . . . (828) 681-9998  
 Talbert Woods/Mooresville . . . . . (704) 799-0456  
 The Mews/Durham . . . . . (919) 489-1910

## SOUTH CAROLINA

Bridge Pointe/Summerville . . . . . (843) 486-0440  
 Devon Pointe/Goose Creek . . . . . (843) 873-6656  
 Galleria Pointe/Rock Hill . . . . . (803) 985-0444  
 Oldfield Mews/Bluffton-Hilton Head . . . . . (843) 757-8944  
 Rice Terrace/Columbia . . . . . (803) 865-1695  
 ShadowMoss Pointe/Charleston . . . . . (843) 766-2220  
 The Islands/Charleston . . . . . (843) 406-0660

## VIRGINIA

Indian River Gardens/Va. Beach . . . . . (757) 420-5729  
 Lakefield Mews/Henrico . . . . . (804) 222-7777  
 Mill Creek Landing/Hampton . . . . . (757) 850-8977  
 River Mews/Newport News . . . . . (757) 887-5757  
 The Palms/Virginia Beach . . . . . (757) 340-2028

**You can reach us at: [www.palms.net](http://www.palms.net)**



**PALMS ASSOCIATES**

397 Little Neck Road 3400-200 Virginia Beach, VA 23452  
 Telephone (757) 340-3669