

Come experience carefree living
at its finest by making your home here at...

BRIDGE *Pointe*



Distinctive Apartment Living

Bridge Pointe creates a welcome feeling with its southern mixture of open spaces, clusters of trees, and greenery. Located in Summerville, South Carolina off Interstate 26 near Azalea Park, minutes from Downtown Summerville and Charleston, shopping, golf, and fishing. Our location truly sets us above the rest.

At Bridge Pointe you will experience spacious apartments and townhomes, far from the ordinary. Your fully equipped home offers you designer kitchens with modern appliances, interior storage, great rooms, enormous closet space, and washer and dryer hook ups for your convenience. For your recreation and relaxation you will enjoy the luxury of an onsite fitness center, community clubhouse, and sparkling swimming pool.

Each of the six styles of floor plans offers unique opportunities for you to decorate your home to your own special tastes. Come experience carefree living at its finest by making your new home here, at Bridge Pointe.



Call or Text Us Today!
843-486-0440

About Palms Associates LLC:

Bridge Pointe is professionally managed and maintained by Palms Associates LLC, a national leader in development, construction, and property management of multifamily rental communities and commercial properties. With over 50 years of experience, our dedicated team of over 200 professionals manages over 6,000 apartment residences throughout the Southeast. Most importantly, we are quality people working diligently every day to enhance our residents' lifestyles.

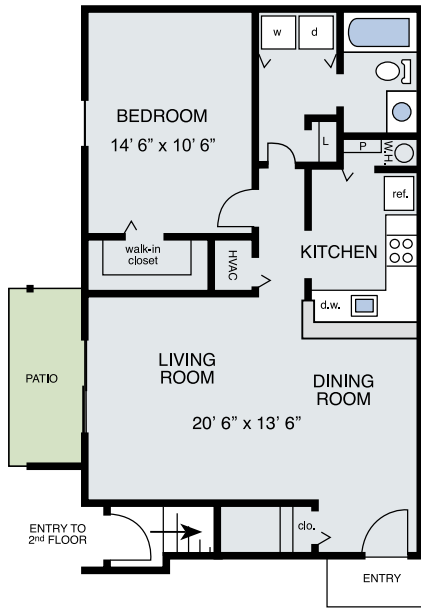
For more information visit us at www.palms.net.

Premium Features and Amenities:

- Sparkling Swimming Pool
- Pet Friendly/Bark Park
- 24-hr Fitness Center with WiFi
- Clubhouse and Business Center
- 24-hr On-site Laundry Center
- BBQ/Picnic Area
- Resident Activities
- Open Floor Plan with Outdoor Space
- Private Entries
- Spacious Kitchens
- Walk-in Closets
- In-unit Washer/Dryer Connections
- Scenic Pond and Wooded Views
- Garages Available
- Professional, Customer Service Driven On-site Staff



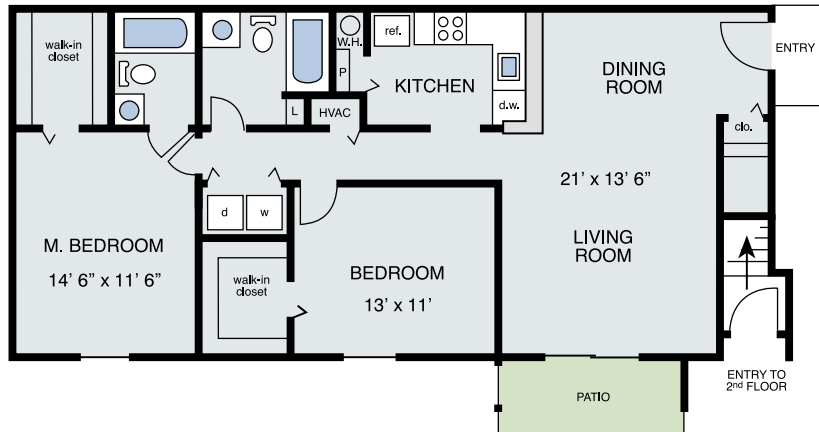
1 & 2 Bedroom Garden Apartments



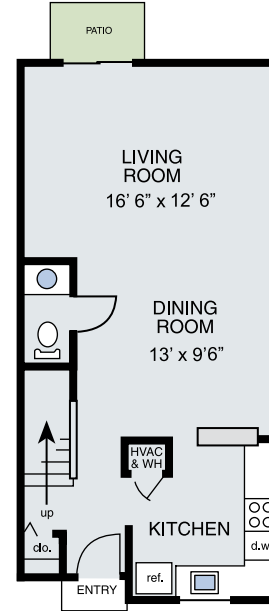
The Ashley
1 Bedroom
1 Bath
790 sq ft

*Floor plans to satisfy
your lifestyle!*

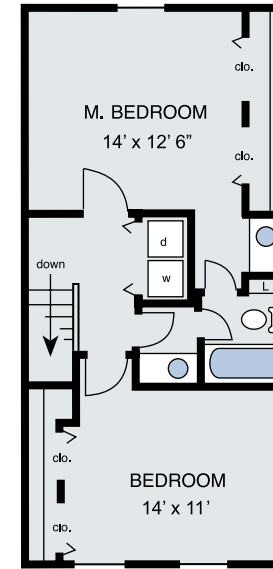
The Cooper
2 Bedroom
2 Bath
1074 sq ft



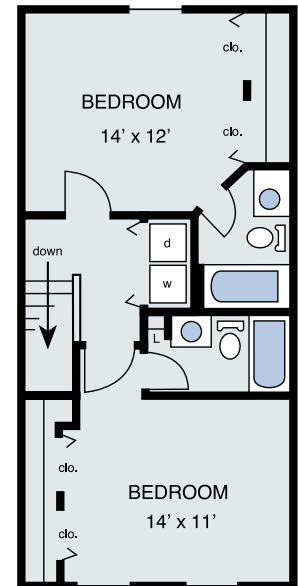
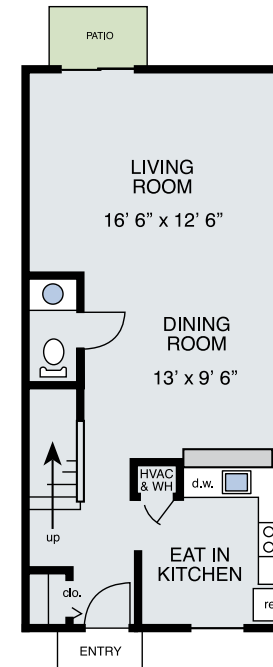
2 Bedroom Townhomes



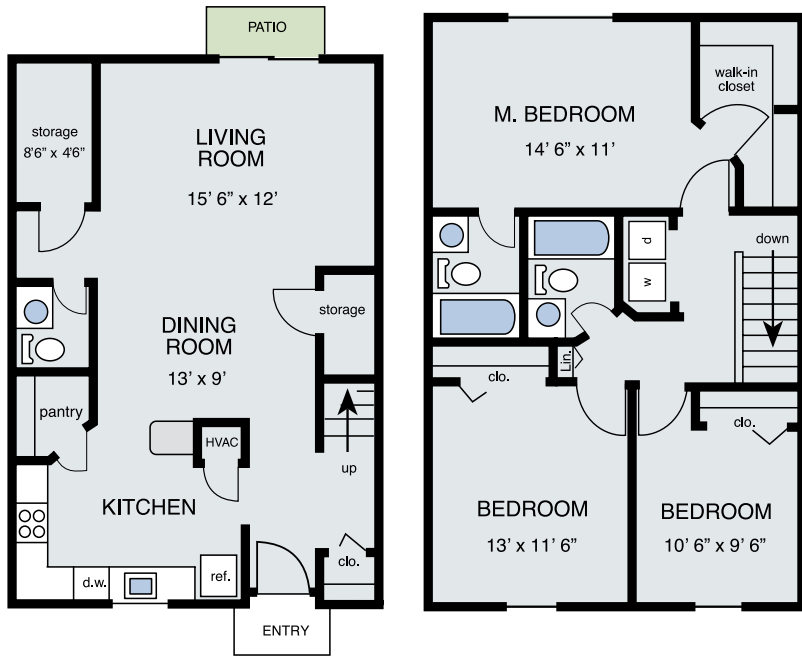
The Limehouse
2 Bedroom
1.5 Bath
1154 sq ft



The Ravenel
2 Bedroom
2.5 Bath
1181 sq ft



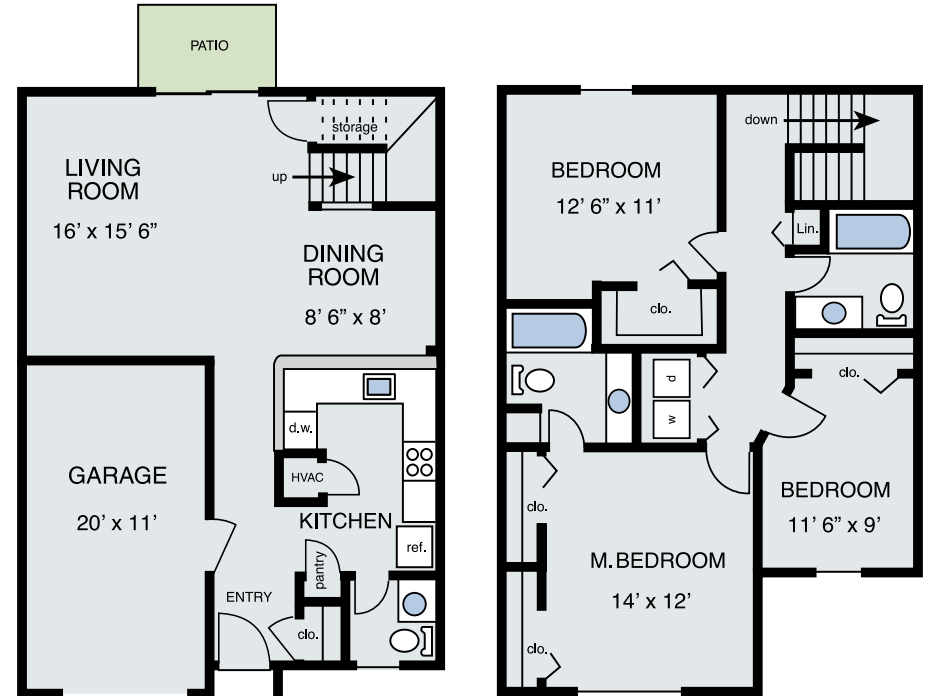
3 Bedroom Townhome



The Sawyer
3 Bedroom
2.5 Bath
1491 sq ft



3 Bedroom Townhome with Garage



The Stone
3 Bedroom
2.5 Bath
1668 sq ft



BRIDGE *Pointe*

101 Bridge Pointe Lane
Summerville, S.C. 29485

www.bridgepointeapartments.com

Call or Text Us Today! 843-486-0440